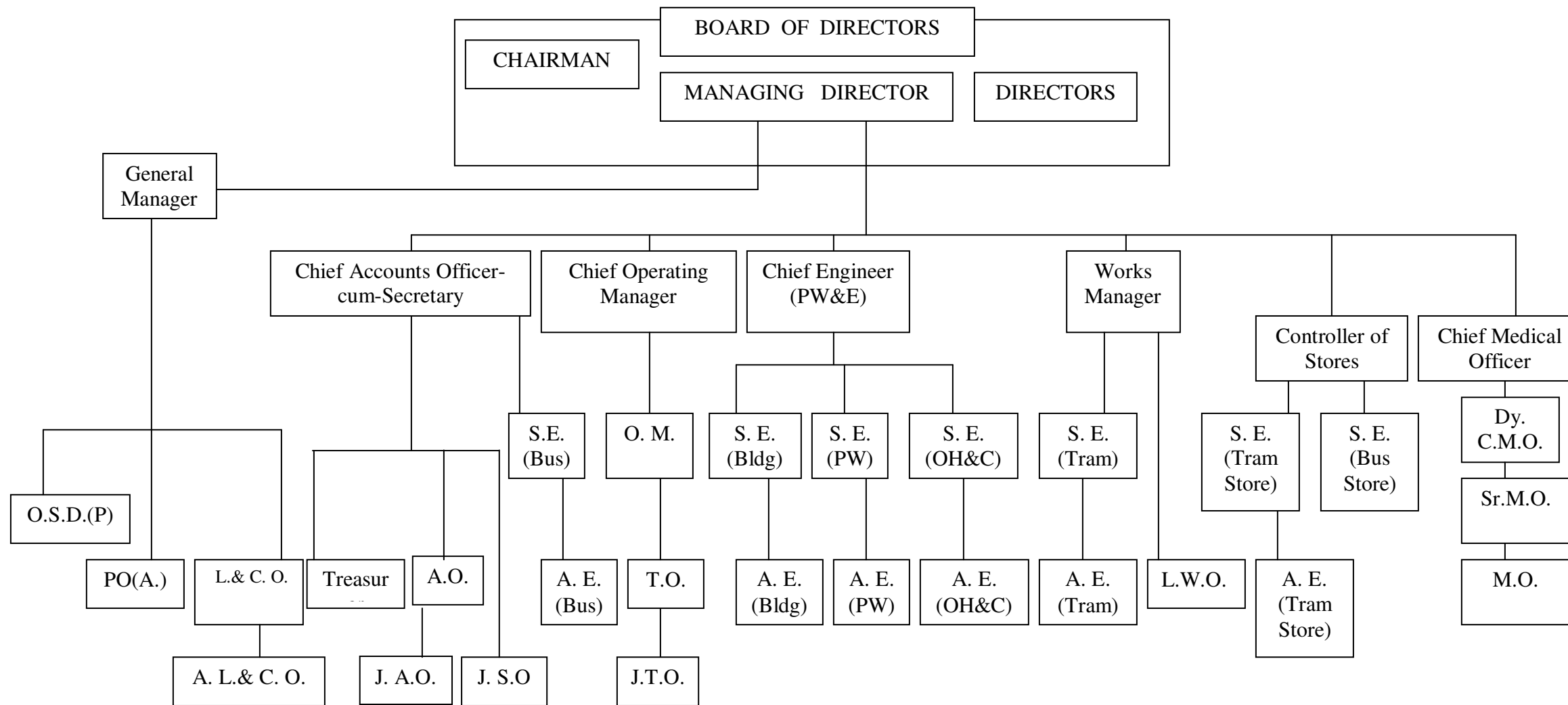


ORGANISATIONAL CHART

The CALCUTTA TRAMWAYS COMPANY (1978) LIMITED



Note: OM- Operating Manager P.O.(A)- Personnel Officer (Admin.) A.E.- Assistant Engineer ALCO- Assistant Law & Claims Officer	S.E.- Senior Engineer Sr.M.O.-Senior Medical Officer L&CO- Law & Claims Officer LWO- Labour Welfare Officer	Dy.C.M.O.- Deputy Chief Medical Officer A.O.- Accounts Officer J.T.O.- Junior Traffic Officer MO- Medical Officer	O.S.D.(P)- O.S.D.(Personnel) T.O.- Traffic Officer J.A.O- Junior Accounts Officer J.S.O- Junior System Officer
--	--	--	---